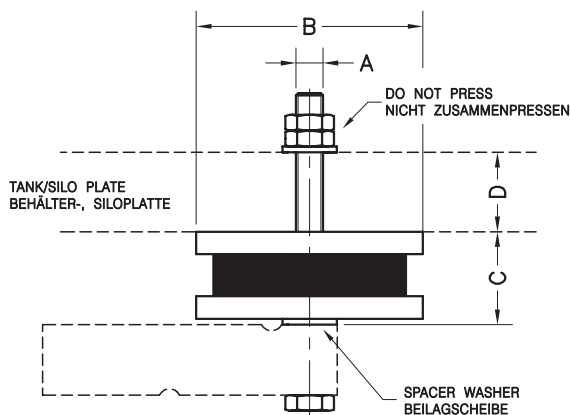
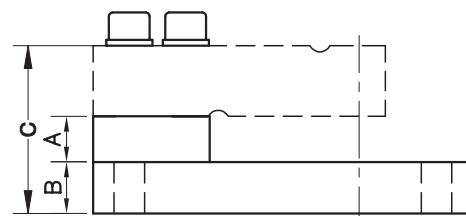
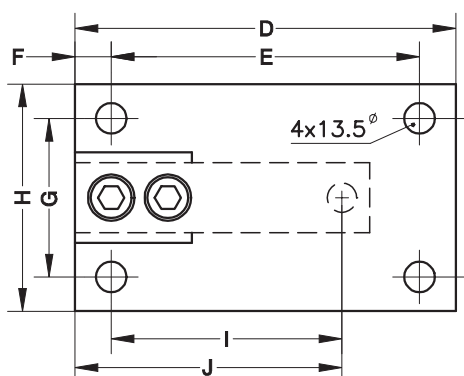


**TANK KIT SILENT-BLOCK LIFT-OFF PREVENTION FOR MOD. 350**  
**ELASTOMERLAGER MIT ABHEBESICHERUNG FÜR MOD. 350**

- **Material: Steel alloy zinc-plated - rubber**  
**Acc. 359xx**  
**Stainless steel - rubber**  
**Acc. 359xxi**
  
- **Material: Verzinker Stahl - Elastomer**  
**Zub. 359xx**  
**Edelstahl - Elastomer Zub. 359xxi**


**Acc. 35909-35910: Silent-block with lift-off prevention / Elastomerlager mit Abhebesicherung**


Accessory Zubehör	Nominal Load Nennlast	A	B $\varnothing$	C	D	Transport Weight Transport- gewicht
<b>35909</b>	0.3...2 t	M12	100	41	0...35	2 kg
<b>35910</b>	3...5 t	M20	150	44	10...35	3.2 kg

**Acc. 35911-35912: Base plate / Grundplatte**


Accessory Zubehör	Nominal Load Nennlast	A	B	C	D	E	F	G	H	I	J	Transport Weight Transport- gewicht
<b>35911</b>	0.3...2 t	20	20	71.5	168	136	16	70	100	101.6	117.6	3.2 kg
<b>35912</b>	3...5 t	20	30	98	212	175	19	84	120	133.3	152.3	6.5 kg

Dimensions in mm. Abmessungen in mm.